



A WELCOME Addition

An expanded cottage is a blend of old and new

BY PHYLLIS SCHILLER • PHOTOGRAPHS BY KAREN MELVIN

When you have a home you love in a great neighborhood but you need more space, one of your options is to move the walls. That's what homeowners Diane Bielen and Bruce Bahneman decided to do, calling on principle architect Martha Yunker, AIA, and project architect Bryan Carpenter, of Y&A Architecture in Minneapolis, to fulfill their wish list for their 1920s bungalow. "We had a three-season porch off the back that we closed off every winter; it was our only southern exposure," explains Diane. "We wanted to turn that space into part of our year-round living. But it was very important that the add-on was in character with the original design of the house." To make the addition appear as if it had always been part of the house, the architects matched some of the rooflines, carefully keying many of the details off of the existing house.





OPPOSITE ABOVE: In place of a sofa, the living room is furnished with upholstered chairs. **OPPOSITE BELOW:** Enjoying the new deck are Diane Bielen, her 12-year-old son, Justin Westad, and Bruce Bahner. **THIS PAGE:** The rear of the house features a deck on top of the garage. Plantation shutters and a cabin-style redwood-framed screen door add architectural interest.

What Was Done

- Expanded the house with an addition designed to seamlessly incorporate into the original 1922 style of the home
- Removed a step-down sunporch and converted it to a casual dining area. Raised the level of the old sunporch to blend into the family room area
- Added a new garage with a rooftop deck. The deck was designed to connect to the casual-dining area inside
- Renovated the existing kitchen, added recessed-paneled custom cabinetry and a new stainless-steel-covered island with fitted drawer storage
- Built a half-wall and custom vanity to compartmentalize a narrow bathroom
- Added a fireplace and entertainment unit to the family room
- Increased storage with built-in custom units in the master bedroom

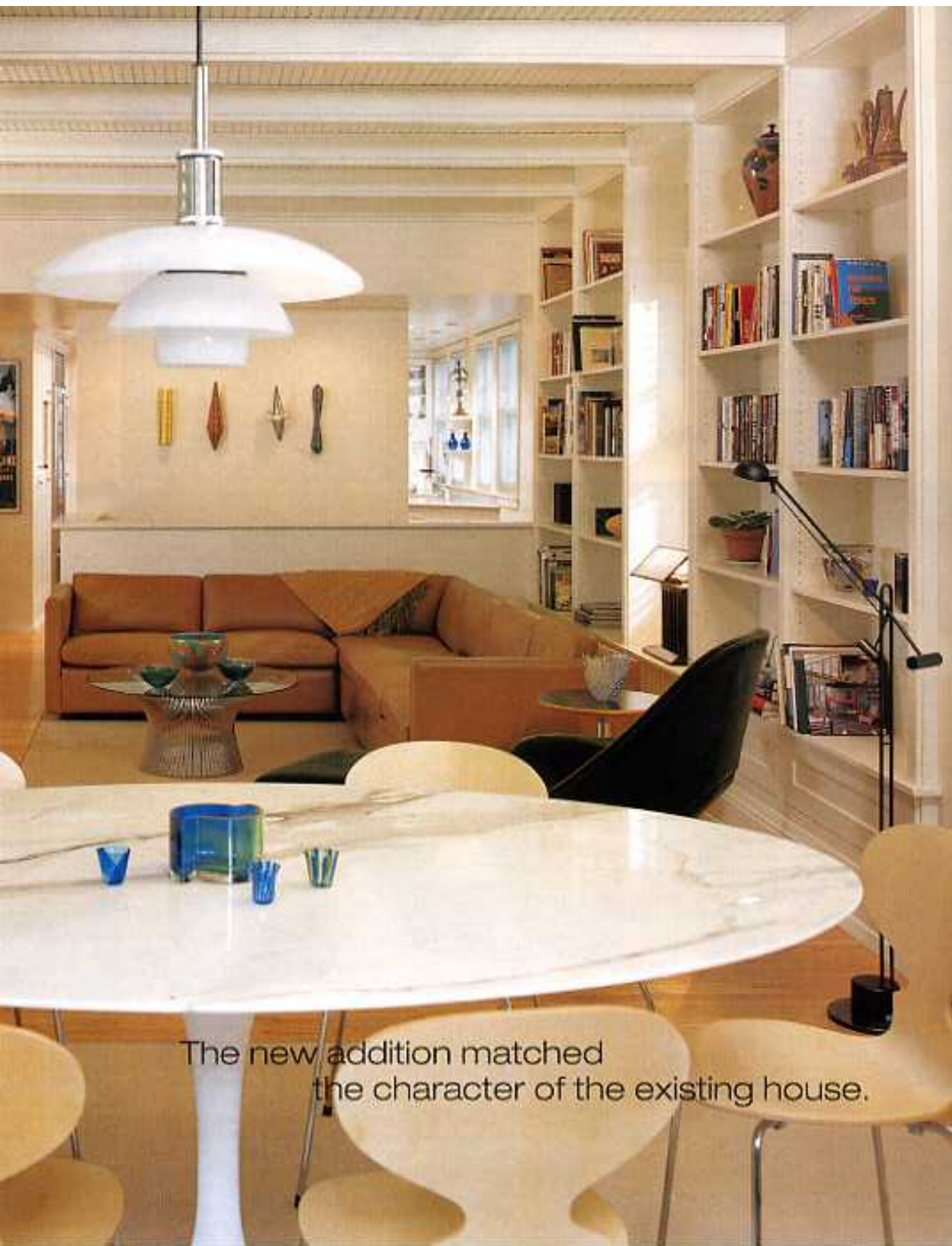
The architects were able to add 250 square feet to the 1,800-square-foot main floor of the house by removing the step-down sunporch and leveling the area with the existing family room. A 350-square-foot garage was added below the expansion. The roof of the garage became a new deck that opens into a casual dining area in the expanded family room.

With its elegant lines, the 32x15-foot family room space is matched in its architectural detailing by the couple's collection of 1940s and '50s furniture, much of it by Knoll (Bruce is a partner in a Knoll office-furniture dealership, Diane is a commercial interior designer). The mix of natural colors—light-oak flooring, maple dining chairs, terra-cotta-hued sectional, deep-green chair—visually expands the room. Tucked behind bifold doors is a large-screen TV and stereo equipment. On the same wall, a fireplace was designed



BELOW LEFT: The screened-in sunporch was removed to make way for a new dining area that opens onto a new deck. The deck expands the family living space. Bases of the bookcases match the wood grilles covering the radiators under the windows. RIGHT: Vertical lines of bookcases are keyed to the beams in the ceiling, which in turn distract attention from the air-conditioning vents.





The new addition matched the character of the existing house.



FLOOR PLAN: STEVEN STAMMER/CZ

The 1922 house has maintained its vintage cottage charm.



ABOVE LEFT: The architects redesigned the rear of the house, creating more living space. **ABOVE:** In the bath, a vanity and half-wall conceal the walk-in shower. New transom windows let in daylight without sacrificing privacy. **LEFT:** The light color scheme in the master bedroom visually expands the space. **RIGHT:** Custom kitchen cabinets offer an abundance of storage space. The island features a stainless steel counter with recessed paneled doors to match the cabinetry.

to "turn the corner," says Carpenter, "so one side can be seen from the family room and the other from the kitchen."

The renovation included reworked kitchen space that had been previously updated. Plain flush-face cabinets were replaced with an inset cabinetry with a paneled look. The recessed, painted-wood units offer an abundance of storage including custom-built tables on either side of the range. Roll-out shelves and built-in recesses for the TV and microwave keep the counters clear. "When we talked about the materials for the kitchen," says Bruce, "stainless steel seemed the most functional; because we like the look of the stainless appliances we decided to also cover the center island counter with it." The 212-square-foot space is designed as both a two-cook kitchen and family area.

The first-floor powder room that doubles as the master bath, also received a face-lift. Since it served both public and private functions, the homeowners wanted a simple look. A new custom vanity with furniture-style legs and limestone undermount sink accomplished both goals. Combined with a half-wall, the vanity shelters the walk-in shower area from view. The arched-top medicine chest, light sconces and recessed wainscoting complete the transformation of the 6x11½-foot room.

Extra space was created when the entertainment unit and fireplace were added to the family room. This space was used to add storage to the master bedroom next door. In the end, Diane and Bruce were very happy with the results; they did what they set out to do—stay put and get a "new" house. ■

